

Wheel Features

| | | | |
|-----------------|----------------------|-----------------|-----------|
| Tread Material: | PU | Core Material: | Cast Iron |
| Bearing: | Ball/Tapered Bearing | Tread Hardness: | 95A±3 |
| Temperature: | -25°C~60°C | Running Speed: | 4km/h |

Note: Use beyond temperature range or beyond the recommended speed may shorten product life or even damage the product.




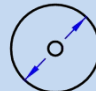


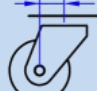

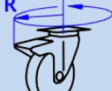
- ✔ 2 precision ball bearings,flexible rotation
- ✔ Polyurethane on casting iron core,high load capacity,water resistance,low tempreture endurable
- ✔ Environmental protection,quiet,effectively protect the floor
- ✔ Painted,anti-rust and anti-corrosion
- ⚠ Not oil-proof,oils may accelerate aging of the wheel

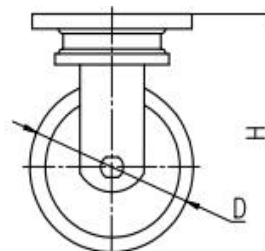
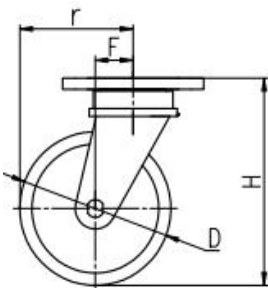


| | | |
|----------------------------|-----------|-----------|
| Rolling resistance | ■ ■ ■ □ □ | Good |
| Wear resistance | ■ ■ ■ ■ ■ | Excellent |
| Operating noise | ■ ■ ■ ■ □ | Very good |
| Floor surface preservation | ■ ■ ■ ■ □ | Very good |

Bracket Features

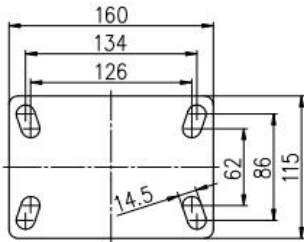
- ✔ Easy to operate,convenient to release the brake
- ✔ Plane bearing,high load capacity,impact resistance and flexible steering
- ✔ Radial conical bearing,high load capacity and impact resistance
- ✔ Single-piece forged base,fully welded,impact resistance and high load capacity
- ✔ Thickened top plate,resistant to compress.Thickened bracket wings,improved load performance.
- ✔ Powder spray treatment,superior anti-rust and anti-corrosion performance,salt spray test over 72 hours

| Parameter (mm) |  |  |  |  |  |  |  |
|-------------------|---|---|---|---|---|---|---|
| Wheel Size | Capacity | Wheel Dia. | Wheel Width | Total Height | Offset | Swivel Radius | Swivel Radius |
| 6" | 1000 kg | 150 | 64 | 205 | 60 | 135 | 270 |
| 8" | 1200 kg | 200 | 64 | 255 | 60 | 160 | 270 |
| 10" | 1600 kg | 250 | 80 | 310 | 75 | 200 | 298 |
| 12" | 2200 kg | 300 | 80 | 360 | 75 | 225 | |

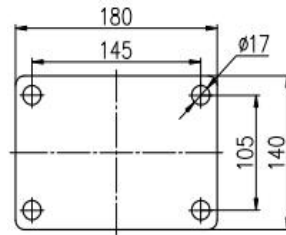


[English]

Mounting Drawing



6"-8" Plate Swivel/Brake/Fixed



10"-12" Plate Swivel/Brake/Fixed

Product ID

Product Images



Wheel Size

Plate swivel

Plate fixed

Plate swivel
brake

Plate swivel
brake

4"

40A01-1156

40A02-1156

40A13-1156

40A27-1156

5"

40A03-1157

40A04-1157

40A14-1157

40A28-1157

6"

40A05-1158

40A06-1158

40A15-1158

40A29-1158

8"

40A19-1159

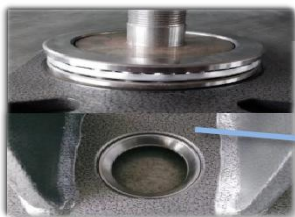
40A20-1159

40A21-1159

/

Product Details

The plate and the base are integrally forged and formed.



The swivel structure is assembly by plain bearing and tapered bearing, with high loading capacity and impact resistance, and flexible.

The brake pedal is convenient to operate and the brake tension can be adjusted.



Powder surface treatment looks nice, more environmental protection and good anti-corrosion performance.

[English]

