

Wheel Features

Tread Material:	TPR	Core Material:	High Strength PP
Bearing:	Single Ball Bearing	Tread Hardness:	75A±3
Temperature:	-15°C~60°C	Running Speed:	3.2km/h

Note: Use beyond temperature range or beyond the recommended speed may shorten product life or even damage the product.



- ✔ Precision ball bearing, flexible rotation
- ✔ Advanced thermo-plastic rubber, silent running, elastic to protect floor
- ✔ Environmental protection, quiet, effectively protect the floor
- ✔ With plastic covers, thread-proof design

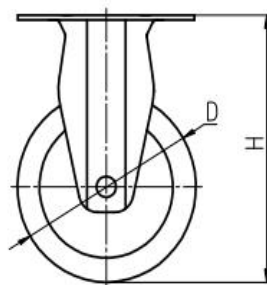
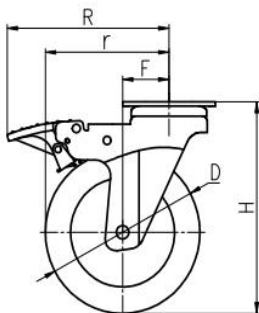


Rolling resistance	■ ■ ■ □ □	Good
Wear resistance	■ ■ ■ □ □	Good
Operating noise	■ ■ ■ ■ ■	Excellent
Floor surface preservation	■ ■ ■ ■ ■	Excellent

Bracket Features

- ✔ ON/OFF pedals, stable braking effect, easy to operate
- ✔ Bracket made of pressed steel plate, firm and strong
- ✔ Powder spray treatment, superior anti-rust and anti-corrosion performance, salt spray test over 72 hours

Parameter (mm)							
Wheel Size	Capacity	Wheel Dia.	Wheel Width	Total Height	Offset	Swivel Radius	Swivel Radius
3"	70 kg	75	25	105	36	73.5	102
4"	80 kg	100	25	138	34	84	102



Mounting Drawing

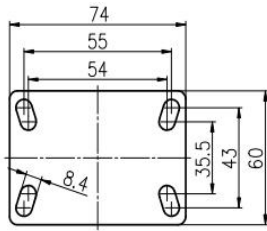


Plate Swivel/Brake

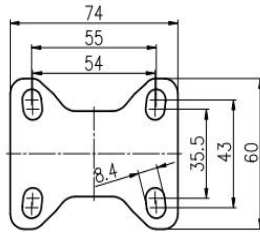
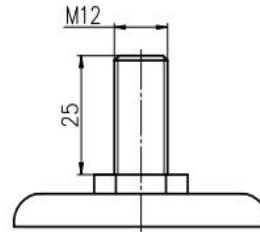
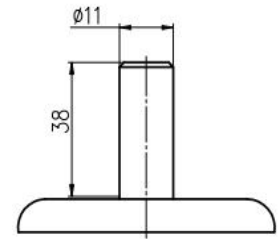


Plate Fixed



Threaded Stem



Stem of Swivel

Product ID							
Wheel Size	Plate swivel	Plate fixed	Plate swivel brake	Threaded stem	Threaded stem brake	Stem Swivel	Stem Brake
3"	20C19-1397	20C21-1397	20C20-1397	20C28-1397	20C29-1397	20C42-1397	20C43-1397
4"	20C25-1399	20C27-1399	20C26-1399	20C32-1399	20C33-1399	20C44-1399	20C45-1399

Product Details

Double steel bowl design is flexible in rotation, Stable structure.



Silver powder surface treatment is beautiful, environmental protection and good corrosion resistance performance.



ON/OFF brake is easy to operate, effortless and can be operated by fingers.



Artificial rubber wheel running without trace mute. Concave-convex plastic cover is beautiful and anti-winding.

